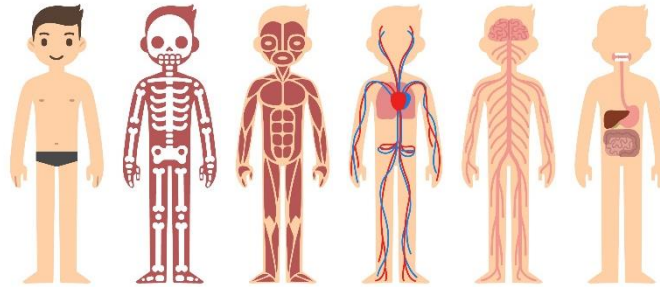




## Christchurch Infant School – Year 1 Project Overview

# Inside Out

(4 weeks) Autumn 1



### Rationale

The Year 1 children come into school to find a muddled body part puzzle. The children need to work together to fix the body back together again. They will play a game using a dice and body part clues to make their own 'body' as a team. This will engage the children's interest in the topic and will initiate the use of scientific vocabulary. After working as a team to complete this task, the children are inspired to find out more about the human body. They will learn to label and name the basic parts of the body. Finally, they look at the five senses; after finding out which body part they are associate with and learn how these are important in our every day life. After all of this learning they present their findings in a super senses session to parents.

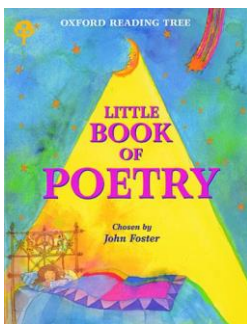
### Hook

The Year 1 children come into the classroom to find a muddled body part puzzle. They work together to make their own 'body' as a team and try to label as many body parts as they can.

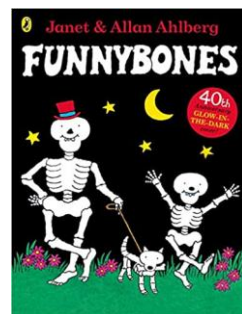
### Outcome

Super senses session. Children lead series of mini-senses workshops for parents involving a taste test, smell test, sight test, touch test and a listening test. Can their parents use their senses to pass the tests?

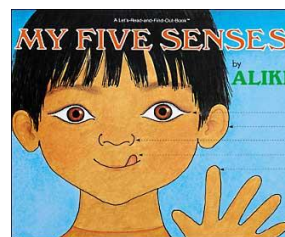
### Key Texts



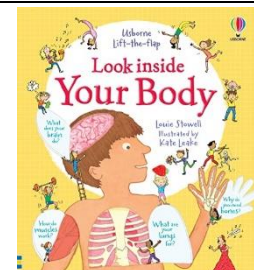
Little Book of Poetry –  
Chosen by John Foster



Funny Bones – Janet and  
Allan Ahlberg



My Five Senses - Aliki



Look inside your body-  
Louie Stowell

### Focus Subject – English

- Using 'My Five Senses' children to write simple sentences about each of the five senses using

### Focus Subject – Science

- identify, name, draw and label the basic parts of the human body.

### Focus Subject – D&T

Children to design and create their own healthy cous cous

- Design purposeful, functional, appealing products for themselves



## Christchurch Infant School – Year 1 Project Overview

<p>capital letters and full stops.</p> <ul style="list-style-type: none"> <li>• Using physical objects as a stimulus, write sentences with capital letters, full stops and finger spaces to describe the objects using their senses.</li> <li>• Write a poem, inspired by what is inside their lunchbox, practising simple sentence formation.</li> </ul>	<ul style="list-style-type: none"> <li>• Say which part of the body is associated with each sense.</li> </ul>	<p>and other users based on design criteria</p> <ul style="list-style-type: none"> <li>• Select from and use a wide range of materials and components, including construction materials, textiles and ingredients, according to their characteristics.</li> <li>• Explore and evaluate a range of food products</li> <li>• Evaluate their ideas and products against design criteria</li> </ul>
<p><b>Application Subject – PE</b> Children to learn about the effects exercise has on your body and how to live a healthy lifestyle. Explore a range of body parts during the Gymnastics unit of work.</p>		
<p><b>Application Subject – PSHE</b> Children to follow JIGSAW Unit 1 'Being Me in My World' as well as thinking about the different ways of keeping our bodies healthy including exercise, hydration, cleanliness, food choices and sleep.</p>		
<p><b>Home Learning</b> – Children to complete an outdoor sensory scavenger hunt and bring their results into class.</p>		
<p><b>Trips and Visitors</b> – Parents visit for a Super senses workshop.</p>		